

GEBERIT INSTALLATION SYSTEMS

THE RIGHT SOLUTION FOR EVERY APPLICATION

**KNOW
HOW**
INSTALLED



CREATING BATHROOMS

No restrictions on room design, quick to install on-site, very little work with other tradespeople and a great price-performance ratio. Customers and clients expect nothing less when it comes to planning and building bathrooms and toilets. Geberit installation systems give you the right solution to meet every challenge.



CONTENTS

12 **GEBERIT GIS**
All-rounder for creative and economic
bathroom design



16 **GEBERIT DUOFIX SYSTEMS**
Create system walls with just a
few accessories



32 **FUNCTIONS AND SOLUTIONS**
Setting standards for
modern WC installation



46 **GEBERIT PRODUCT SYSTEMS**
Harmony in front of
and behind the wall



22 **GEBERIT DUOFIX**
Versatile installation elements,
tried and trusted millions of times



28 **GEBERIT KOMBIFIX**
Easy installation in solid wall
construction



60 **PLAN WITH GEBERIT**
Tools and services for
efficient planning processes

GEBERIT KNOW-HOW

EXPERTS IN SECURE BATHROOM FIXTURES



Geberit is the driving force in Europe for innovation in sanitary technology, thanks to significant investments in research and development. We combine pioneering technologies with comprehensive know-how to make sanitary projects easier to plan, quicker to deliver and more flexible to install. All Geberit installation systems come with sound insulation and fire protection for your safety and privacy. Benefit from our wide range of consultation and support services as well as documentation on planning, installation and maintenance. Geberit is your go-to supplier for all your bathroom needs!



BATHROOM PLANNING

Practical support and systems for planning and creating bathroom facilities.



MOISTURE PROTECTION

Special panelling designed for areas exposed to high amounts of moisture provides permanent moisture resistance



DIGITAL DESIGN

Market-specific BIM content packages in various formats



HYDRAULICS

Geberit has expertise in all aspects of water hydraulics in buildings, from drinking water supply to usage and drainage



STATICS

Comprehensive static test procedures in our own Building Technology and Acoustics Laboratory to ensure elements can bear high loads



FIRE PROTECTION

Fire protection systems ensure sanitary installations comply with current standards, regulations and legal requirements



ELECTRONICS

Easy installation of power supply and control electronics for bathroom fixtures thanks to the pre-fitted Geberit Power & Connect box and clearly separated work for different trades



SOUND INSULATION

Our Geberit GIS and Duofix systems provide excellent sound decoupling from buildings and have been tested as complete systems (installation systems and piping) in lots of real-world situations

www.geberit-global.com

THE FULL RANGE OF GEBERIT INSTALLATION ELEMENTS

Geberit installation systems offer an impressive range of installation elements that are ideal for almost any job in the plumbing sector – from private bathrooms and complex, large-scale projects to new buildings and renovations.

THE PERFECT SOLUTION FOR ALL BATHROOM FIXTURES

Whether it's a WC, washbasin, shower, urinal or bidet: We have the perfect installation system and elements for every bathroom fixture and structural requirement. With our smart technology and flexible combination options, you can effortlessly design both simple and complex room concepts.

FOR PROJECTS OF ALL SIZES

From individual elements for bathroom fixtures to modular systems and industrial prefabrication for large projects, Geberit delivers efficient, safe and future-proof installation – regardless of construction type and project size.

- For wall-hung WCs
- Available with Sigma and Omega concealed cisterns
- Optional: Power & Connect box, odour extraction unit and hygiene flush unit
- Also available in child-friendly sizes (Geberit Bambini)



↑
INSTALLATION ELEMENTS FOR WCS*

- For wall-hung bidets
- Available in the following heights: 82, 98 and 112 cm



↑
INSTALLATION ELEMENTS FOR BIDETS*

- For washbasins with deck-mounted taps
- Secure fastening and height adjustment
- For all washbasin sizes
- Optional function box
- Optional concealed trap
- Optional water meter section



↑
INSTALLATION ELEMENTS FOR WASHBASINS*

- For washbasins with wall-mounted taps
- With crossbar for easy installation of Geberit wall-mounted taps or with integrated mounting plate for taps from other manufacturers
- For all washbasin sizes
- Optional function box
- Optional concealed trap
- Optional water meter section



↑
INSTALLATION ELEMENTS FOR WALL-MOUNTED TAPS*

- For all types of urinal
- Easy installation
- Optional function box for manual and touchless actuation
- Optional electrical connection



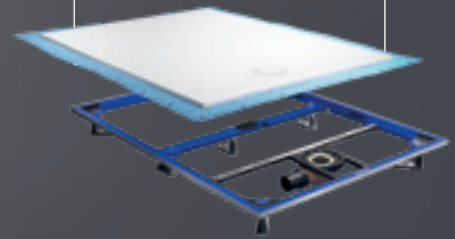
↑
INSTALLATION ELEMENTS FOR URINALS*

- For all types of shower
- With CleanWall
- Optional crossbars or mounting plates for installation of shower taps



↑
INSTALLATION ELEMENTS FOR SHOWERS

- For Geberit CleanFloor shower surfaces and shower surfaces made of steel
- Easy to install, simple to adjust
- High degree of prefabrication
- Highly stable and durable
- Precise positioning



↑
INSTALLATION ELEMENTS FOR SHOWER SURFACES

NEW

* Also available with Geberit Kombifix.



GEBERIT GIS

THE ALL-ROUNDER

SYSTEM WALL

- Perfect for prefabrication
- Flexible for creative bathroom designs
- Tool-free connection technology for quick and easy installation
- Connections for all bathroom fixtures

GEBERIT DUOFIX SYSTEM

THE SYSTEM GENIUS

SYSTEM WALL

- Perfect for different bathroom designs
- Create complete sanitary walls from Duofix elements with just a few accessories
- Easy one-person installation
- Prewalls and partition walls, partial and room-height

GEBERIT DUOFIX ELEMENTS

THE DRYWALL MASTER

METAL OR WOODEN SUPPORT

- Individual element for installation in drywall construction
- Installation elements for all bathroom fixtures and structural requirements
- Clever installation details for easy and secure installation in any bathroom

GEBERIT KOMBIFIX

THE SOLID WALL EXPERT

BRICK OR CONCRETE WALL

- Easy installation for wet and solid construction
- Comprehensive range for all important bathroom fixtures
- Easy installation in just four steps



GEBERIT GIS

CREATIVE BATHROOM DESIGNS BROUGHT TO LIFE FOR LESS

The Geberit GIS installation system makes creative bathroom design quick, easy and economical. Design and bring to life unique bathrooms and stand-alone solutions from freestanding bathroom walls, half-height room dividers, room-height or part-height partitions, alcoves and shelves. Industrially pre-assembled, room-height modules are available for all bathroom fixtures for quick installations in project business. Sound insulation and fire protection are built-in according to current regulations.

www.geberit-global.com/gis

COMPLETE SANITARY WALLS IN JUST A FEW STEPS

Geberit GIS is a universal and incredibly versatile installation system, making it perfect for new buildings and for renovations and refurbishments in properties of all sizes. Geberit GIS system technology allows a single plumber to set up a sanitary module suitable for tiling in just a few simple steps using a support system, installation elements and system panel. Industrially prefabricated installation elements speed up work in bathrooms that have the same floor plans and fixtures in large projects.



↑ Tool-free installation with removable profile connectors.



↑ Quick and secure fixing and easy height adjustment of installation elements without requiring any tools.

QUICK INSTALLATION, EASY PREFABRICATION

This flexible installation system is extremely versatile by design, so it can be used as a prewall or self-supporting partition wall, as a stand-alone solution without any connection to walls, under sloping roofs or in recessed installations. Our comprehensive range of accessories has the perfect solutions for nearly any application and structural requirement. The benefits of Geberit GIS become clear both during installation on site and in prefabrication at the workshop or industrial prefabrication.

GEBERIT GIS SYSTEM PANEL

The Geberit GIS system panel provides peace of mind in wet rooms and areas exposed to high amounts of moisture, such as shower cubicles.

- Core and cardboard-impregnated gypsum board panels for areas exposed to normal amounts of moisture
- Aqua panel Pro for areas exposed to high amounts of moisture

- Versatile system – ideal for unique structural requirements
- Quick installation thanks to well-designed connection technology
- Easy compensation of dimensional tolerances
- Reliable sound decoupling
- Accurate calculations for materials and work time
- Versatile prefabrication options



← Clever installation details, including depth-adjustable pipe brackets, make it easy to adjust to dimensional tolerances.



↑ Cork sound insulating panels provide effective sound decoupling of support system and building structure



GEBERIT DUOFIX SYSTEM

CREATE A SYSTEM WALL WITH JUST A FEW ACCESSORIES

The Geberit Duofix system wall enables quick, clean and efficient bathroom installations in new buildings and renovation projects. You can use it to create drywall walls that meet high static-load requirements with minimal effort and just a few accessories, eliminating the need to work with other trades. Our new Duofix installation element makes it even easier to install in the system.

www.geberit-global.com/duofix

DESIGN FREEDOM IN DRYWALL CONSTRUCTION

The Geberit Duofix system is perfect in drywall construction for a wide range of structural scenarios and planning options. It requires very little additional work in terms of planning and tendering.



↑ Attach Geberit Duofix acoustic insulation tape and fix the system rails in the floor and the ceiling.

EASY PLANNING AND FLEXIBLE INSTALLATION OF SYSTEM WALLS

Whether it's partial or room-height prewall and partition walls, ceiling lowering or connection to sloping roofs, the Geberit Duofix system is easy to plan and can be installed as an integrated solution by a single tradesperson with minimal tools. This gives you complete control of both common and complex structural requirements in new and existing buildings.

CLEAN RENOVATIONS

The benefits of the system are also evident in renovations when the house is still being lived: it generates less dirt and noise, leads to shorter building times and reduces the coordination effort as fewer different trades are required.

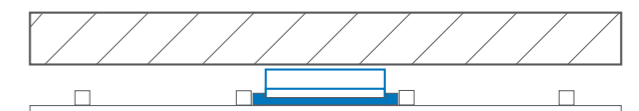
OPTIMUM SOUND DECOUPLING

The Duofix system wall can be built into room-height installations without bracing to the rear wall thanks to its outstanding load-bearing properties. This provides excellent sound decoupling.

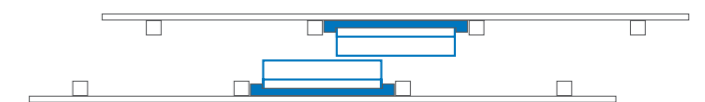


↑ Practical extension for side stud fastening

- Fire and moisture protection as well as sound insulation and proven statics
- Complete solution from a single source
- Room-height and part-height installation prewalls
- Separating installation partition walls
- No restrictions on how bathroom fixtures can be arranged in adjoining bathrooms



↑ System prewall without bracing to the rear wall to ensure sound decoupling.



↑ Installation elements can be placed on both sides.

GEBERIT DUOFIX IN THE SYSTEM

Geberit is continuously enhancing the Duofix system by paying attention to detail and considering the practical experience of our customers. Lots of clever and largely tool-free installation methods make everyday work easier and streamline construction processes.

**NOW EVEN QUICKER,
EASIER AND
MORE FLEXIBLE TO
INSTALL**
With system rail and room-height studs

GEBERIT DUOFIX INSTALLATION: MORE FLEXIBILITY



1

SYSTEM WALL ANCHOR WITH TWIST LOCK

You can securely fix the wall anchor in the system rail without using any tools by turning it 45 degrees.



2

CLICK-IN FEET

No drilling or screwing required! Quickly snap the feet into the Duofix system rail without using any tools.



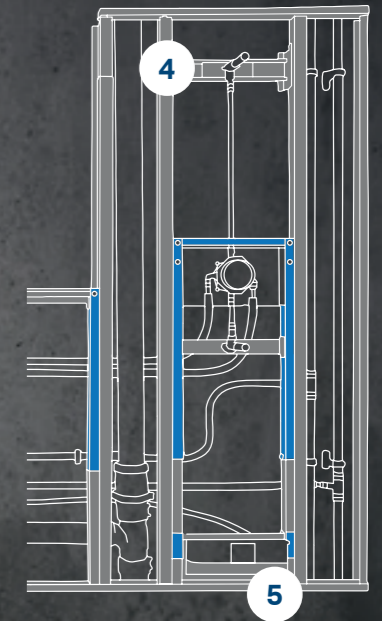
3

DUOFIX SYSTEM RAIL AS PANELLING SUPPORT

Optional panelling support with system rail and system fastening bracket between the elements.



→
ROOM-HEIGHT WALLS
The system rails and extendible room-height studs make it quick and easy to create room-height walls – almost without using any tools at all.



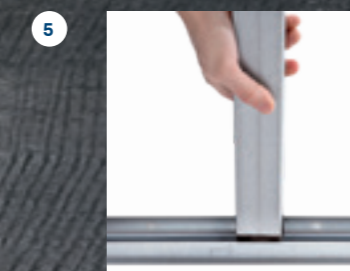
GEBERIT DUOFIX SYSTEM WALL: JUST A FEW SIMPLE STEPS



4

TWIST IN

Fix the room-height stud in the ceiling rail by turning it 45 degrees.



5

PULL OUT

Pull out the room-height stud hanging on the ceiling rail and click it into the bottom system rail without using any tools.



GEBERIT DUOFIX ELEMENTS

ALL- ROUNDERS IN DRYWALL CONSTRUCTION

Whether for prewall or inwall installation, the tried-and-trusted Geberit Duofix installation system has a wide range of self-supporting installation elements for all standard bathroom fixtures. It also boasts a variety of elements for unique demands and bathroom challenges.

www.geberit-global.com/duofix



GEBERIT DUOFIX ELEMENTS

VERSATILE FOR ALMOST EVERY BATHROOM

The Geberit Duofix toilet installation element has been used millions of times and proven itself over many decades. Geberit has never stopped developing Duofix, incorporating suggestions from plumbers and the latest findings in hydraulics and installation technology. This ensures our customers always get the best flush technology – both today and tomorrow.



↑
Geberit Duofix element for washbasins

↑
Geberit Duofix element for toilets

↑
Geberit Duofix element for wall drains



↑
Height-adjustable feet and, if necessary, feet extensions make it easy to adjust to suit different floor constructions.



↑
Threaded rods that can be screwed through, even in the washbasin element, remove the need to cut them to length later.

UNIVERSAL FOR ALL BATHROOM FIXTURES

Geberit Duofix allows plumbers and plumbing engineers to choose from a comprehensive range of universal self-supporting installation elements. It's the perfect solution for routine installations and for when structural requirements are more challenging.

INNOVATIVE, TRIED-AND-TRUSTED INSTALLATION

Our installation techniques are based on the latest findings from engineering practice and offer a wide range of time-saving features and adjustment options to make installation easier and faster. We carefully prepare Duofix installation elements in our factory to ensure they are quick to install and connect with water, drainage and electrical connections (if necessary).

- Universal individual elements for drywall construction
- Can be enlarged for complete prewall and partition wall installation
- Maximum design freedom thanks to slim construction
- Optimum sound decoupling
- Lots of smart installation details

>60

YEARS OF CONCEALED FLUSH TECHNOLOGY



INSTALLED MILLIONS OF TIMES

50

YEARS OF SPARE PARTS AVAILABILITY*



THE HEART OF THE GEBERIT WC SYSTEM

NEW

GEBERIT DUOFIX ELEMENT FOR SHOWER SURFACES

THE ORIGINAL – NOW ALSO HORIZONTAL

The Duofix installation frame for the shower is based on the Duofix installation elements for the WC. It provides safety, stability and easy installation at the shower area using proven installation routines.



↑
Geberit Duofix element for shower surfaces



↑
The mounting feet can be easily clicked into the installation frame.



↑
The height of the feet can easily be adjusted from above with an hexagon key, ensuring a floor-level installation of the shower surface.

EASY AND SECURE INSTALLATION

With the Duofix installation frame, the Geberit shower surface can be installed up to three times faster than with conventional systems – all while maintaining full stability and quality.

COMPLETE SOLUTION WITH FEW COMPONENTS

Unlike many conventional installation systems with numerous parts, the prefabricated installation frame comes with just a few components. The factory-applied sealing fleece makes sealing quick and easy.

- Complete system with all necessary installation accessories
- Fast and easy installation using proven, familiar installation routines
- High degree of prefabrication
- Easy to install, simple to adjust
- Additional reinforcement with central support foot

50

YEARS
SPARE PARTS
AVAILABILITY*

>10

YEARS
WARRANTY



DUOFIX FOR THE
WC – INSTALLED
MILLIONS OF
TIMES

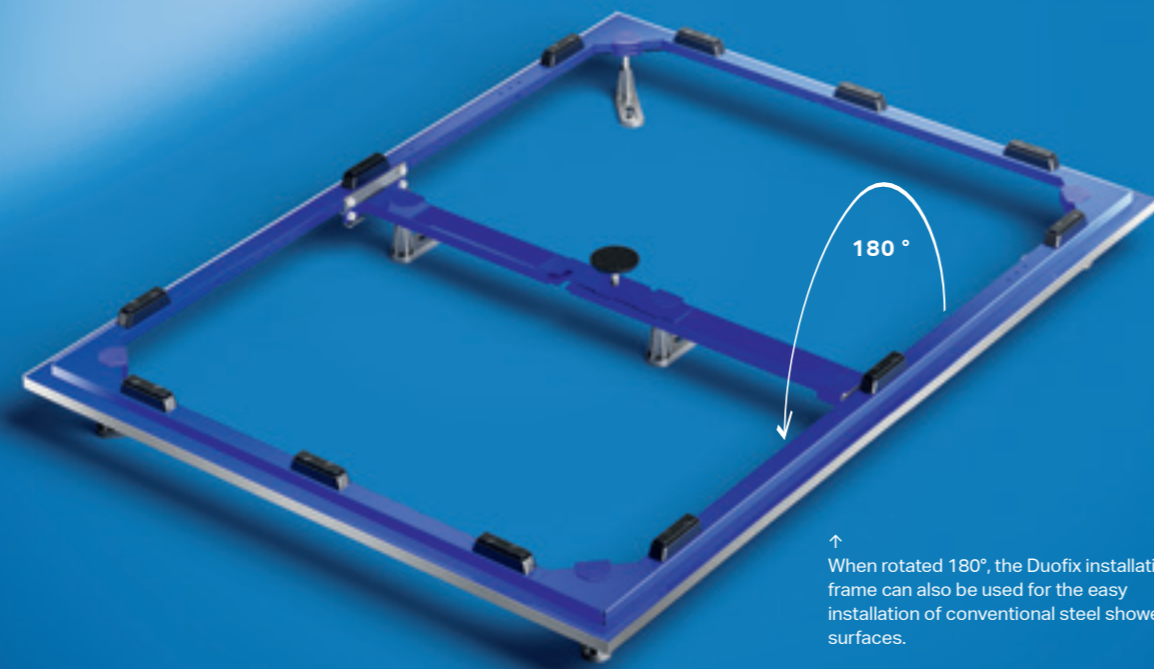


Discover the whole range of Geberit shower solutions with shower channels, floor drains and shower surfaces: www.geberit-global.com/shower

NEW

GEBERIT DUOFIX ALSO FOR THIRD-PARTY PRODUCTS

ONE FRAME MANY POSSIBILITIES



↑
When rotated 180°, the Duofix installation frame can also be used for the easy installation of conventional steel shower surfaces.

Its smart design allows the Geberit Duofix shower installation frame to be used with conventional steel shower surfaces from any manufacturer.



↑
The steel shower surface installation set includes all necessary accessories.



↑
Click the mounting feet into place.



↑
Position the supplied spacers for the steel shower surfaces.



↑
Adjust the height of the mounting feet from above using a hexagon key.

- One mounting frame for many shower trays models
- Fast and easy installation using proven, familiar installation routines
- All necessary accessories included in the steel shower surface installation set
- High degree of prefabrication, all components included

VERSATILE IN USE

The Duofix installation frame makes installing steel shower surfaces easier. Only a few adjustments are necessary – installers benefit from the well-designed Duofix system.



Discover the whole range of Geberit shower solutions with shower channels, floor drains and shower surfaces:
www.geberit-global.com/shower-bath

GEBERIT DUOFIX IN DETAIL

FOR ANY INSTALLATION SITUATION

- 1** **PULL-OUT SIDE FASTENING PLATE**
Pull-out side fastening on the upper frame end for mounting on vertical studs for room-height applications.
- 2** **ALTERNATIVE POSITION FOR WALL ANCHORS**
An additional fastening hole for wall anchors to adjust their position to suit the structural conditions, e.g. in the case of obstacles or cables behind the wall.
- 3** **SUITABLE FOR 25 CM HIGH FLOOR CONSTRUCTION**
Extendible leg supports with a larger adjustable range for floor constructions up to 25 cm.
- 4** **CLEVER FOOT PLATE DESIGN**
Thanks to a hollow space, the foot plate can also be mounted above the fastening screws on the floor profile without the screw head getting in the way.
- 5** **SUITABLE FOR WC UP TO 70 CM**
The optimised frame geometry enables the stable mounting of all kinds of wall-hung WCs with a projection of up to 70 cm.

OPTIMISED HYDRAULICS

- 6** **WATER-SAVING FLUSH VALVE**
The volume of water can be set on the Type 212 flush valve. The throttle can be used to adjust the flow rate according to the WC ceramic appliance.
- 7** **QUIET FILL VALVE**
The Type 383 fill valve ensures consistent, quick filling with minimal noise emissions.



EASY HANDLING

- 8** **ADDITIONAL MARKINGS**
Markings on the blue frame make measuring easier for the centre of the threaded rod and middle of the connection bend.
- 9** **SCREWS WITH HEXALOBULAR SOCKET**
Screws with an additional hexalobular socket (TX) offer an additional choice of tool when working with a cordless screwdriver.
- 10** **SIMPLY ADJUSTABLE PIPE BRACKET**
The pipe bracket can be easily adjusted to suit the position of the connection bend by sliding to ensure tension-free installation of the connection bend.
- 11** **EASY-TO-INSTALL FOOT EXTENSIONS**
New foot extensions which are simply mounted on the existing leg supports. These therefore no longer have to be disposed of.

GEBERIT DUOFIX SYSTEM

Just a few steps to make a system wall. You can create complete, structurally load-bearing system walls with just two accessories and in only a few steps.

Find out more on [page 16](#).

CO₂ REDUCTION



Thanks to a sophisticated design, the deployment of less material and the use of green electricity in production, each new Duofix element for wall-hung WCs causes 10% fewer CO₂ emissions compared to its predecessor.



GEBERIT KOMBIFIX

TRIED AND TRUSTED IN SOLID CONSTRUCTION

Geberit Kombifix installation elements are designed to be used in solid wall construction and wet construction. They are easy to install and incredibly versatile.

www.geberit-global.com/kombifix

GEBERIT KOMBIFIX

QUICK AND COMPLETE INSTALLATION IN JUST A FEW STEPS

Geberit Kombifix installation elements provide long-lasting, reliable performance. We have a large range for all installation elements. A wide selection of accessories, such as sound-dampening sets and waste connector bends, is also available to make on-site installation even quicker and easier.



The fastening points on the bottom end can be used in a variety of ways and their depth can be adjusted.



Threaded rods in the installation element are screwed on to the required length and fixed in place with a nut.



The top of the Kombifix element is fastened in place with a fold-out strap.

COMPLETE RANGE FOR ANY INSTALLATION ELEMENT

Geberit Kombifix installation elements are perfect for partial and room-height prewalls in solid construction. Elements are available for toilets and shower toilets, bidets, washbasins and wall-mounted taps, shower and urinals. A single plumber can easily install the elements themselves in just four steps.

MODERNFLUSH TECHNOLOGY

Kombifix toilet elements are available with Geberit Sigma and Omega cisterns in various construction heights. They can be combined with all flush plates in the Sigma and Omega series. The toilet elements are also suitable for Geberit AquaClean shower toilets and can be pre-wired for an electrical connection. The service opening makes the cistern easily accessible in masonry walls.

- Complete range for solid construction
- Easy one-person installation, wide range of accessories
- Installation takes just four steps
- Durable and easy to service
- WC elements for Geberit Sigma and Omega cisterns
- WC elements suitable for Geberit AquaClean shower toilets

FUNCTIONS AND SOLUTIONS

THE STANDARD FOR **MODERN FLUSH TECHNOLOGY**

Geberit invented the concealed cistern over 60 years ago and made it standard in modern bathroom design. We haven't stood still, and our customers always enjoy state-of-the-art concealed flush technology that sets new standards. Geberit concealed cisterns stand out thanks to low water consumption, minimal noise emissions, maximum reliability and outstanding warranties.

www.geberit-global.com/installation-systems



VERSATILE FOR ALL GEBERIT INSTALLATION SYSTEMS

Offer your customers a wide range of potential application with Geberit WC elements from the GIS, Duofix and Kombifix installation systems. From odour extraction units to shower toilets and easily accessible solutions, these elements give you everything you need to make bathrooms better – now and in the future.

RANGE



DESIGN VARIETY

Various flush plate series with a diverse range of shapes, colours and materials.



INSTALLATION SYSTEMS

Can be used in all Geberit installation systems.



INSTALLATION ELEMENTS

For all bathroom fixtures, structural requirements and unique applications.

SERVICE

50
Years

SPARE PARTS AVAILABILITY

For all replaceable mechanical parts of Geberit concealed cisterns.



MATERIAL DETERMINATION VIA THE APP

Find all spare parts faster for Geberit concealed cisterns from 1964 onwards.



INDUSTRIAL PREFABRICATION

Fast, economical and secure in the commercial sector.



FUNCTION



FLUSH PLATE AND FLUSH ACTUATION

Manual, electronic, touchless and with attractive additional functions.



GEBERIT DUOFRESH ODOUR EXTRACTION UNIT

Say goodbye to unpleasant odours by installing or retrofitting the Geberit DuoFresh module.



TYPE 383 FILL VALVE AND TYPE 212 FLUSH VALVE

Low-noise refilling of the cistern with individually adjustable flush volume and performance.



GEBERIT AQUACLEAN SHOWER TOILET

Comes ready to install shower toilet comfort features.



ELECTRICAL CONNECTION

Comes ready to install the Geberit Power & Connect box.



EXPERTISE

MEET BUILDING SAFETY REQUIREMENTS

All required documentation for fire, sound and moisture protection as well as statics.



ACCESSIBLE

Installation elements with integrated height adjustment or mounting plates for support rails and handles.



HYDRAULICS KNOW-HOW

Hydraulically optimised for a cleaner, water-saving flush.

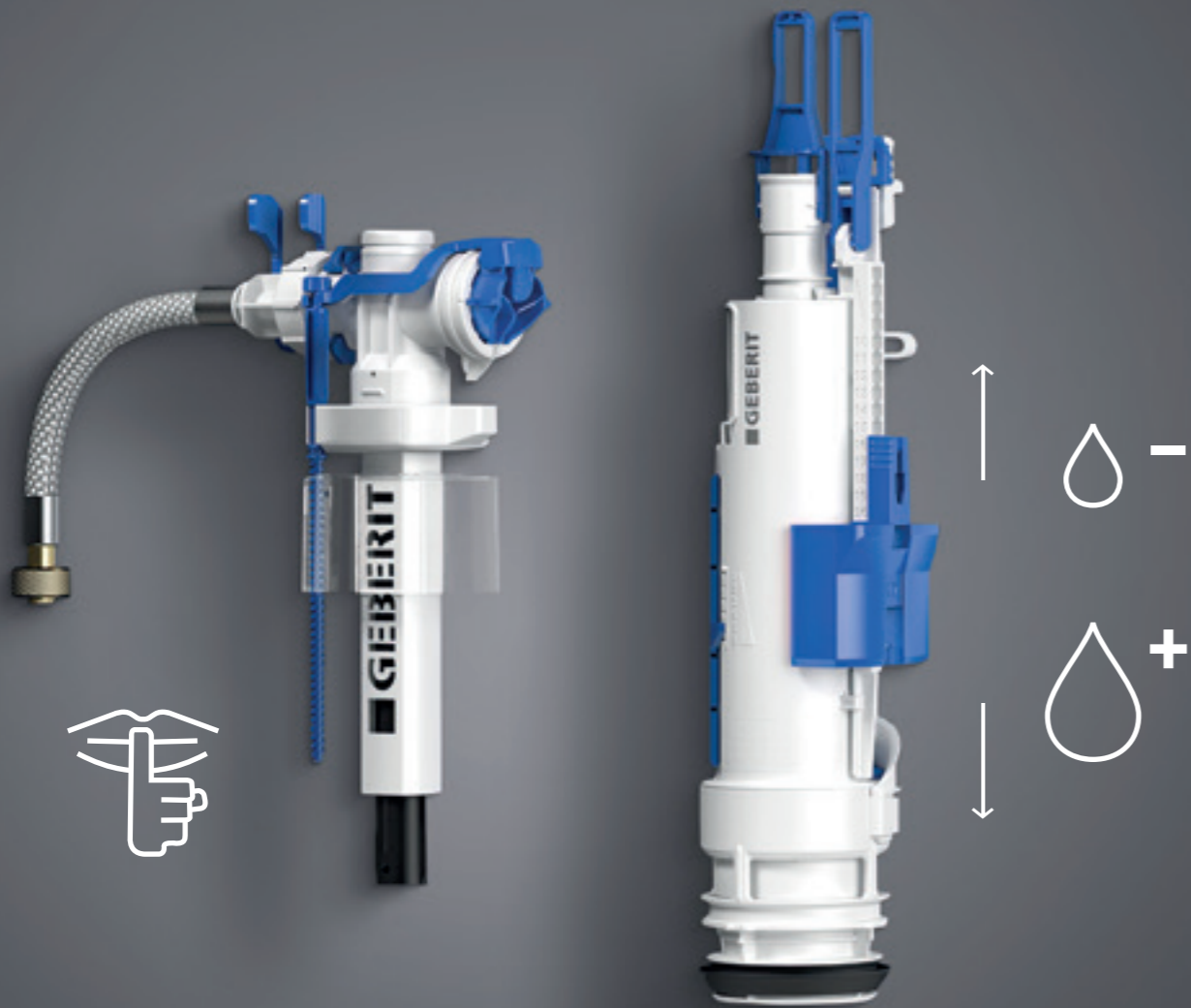


CLEVER CONNECTIONS

Tool-free installation of all key components.

ULTRA-QUIET, HIGHLY EFFICIENT, EXTREMELY THOROUGH

Geberit flush and fill valves and WC ceramics are designed to work together perfectly. They provide optimum cleanliness and discharge behaviour while minimising noise. Flush volume settings and a throttle offer flexible adjustment options.



↑ The new Type 383 fill valve reduces the amount of noise generated in the cistern when refilling by around half compared to its predecessor.



↑ The compact dimensions of the fill and flush valve make them easier to install and remove when carrying out maintenance or renovations.

- Flush and fill valve suitable for all Geberit cisterns
- Slim and compact for easy installation and removal
- Large flush volume can be set to either 4, 4.5, 6 or 7.5 litres
- Small flush volume can be set to either 2 or 4 litres
- Throttle reduces the risk of water splashing out of the pan
- 50% less noise generated when refilling
- Type 212 flush valve for Sigma concealed cisterns from 2002 onwards
- Type 383 fill valve backwards compatible with all Geberit UP and AP cisterns going back 50 years

VERSATILE AND TAILORED TO YOUR NEEDS

The Geberit Type 212 flush valve and Type 383 fill valve are built into all Geberit Sigma and Omega cisterns and can be retrofitted in many old cisterns. The large and small flush volumes can be adjusted to suit your needs using a simple slider. You can also set the throttle to any one of five levels to prevent water from splashing out of the pan – the default setting on Geberit toilets provides reliable protection.

MUCH QUIETER FILLING

Hydraulic optimisations reduce the amount of noise generated by the new Type 383 fill valve when refilling the cistern by half*. Together with the cistern and TurboFlush technology, this makes your bathroom an even more relaxing environment.

SLIM DESIGN

Flush and fill valves are smaller than their predecessor models. This saves material and makes them easier to install and remove via the service opening on the cistern.



← THROTTLE

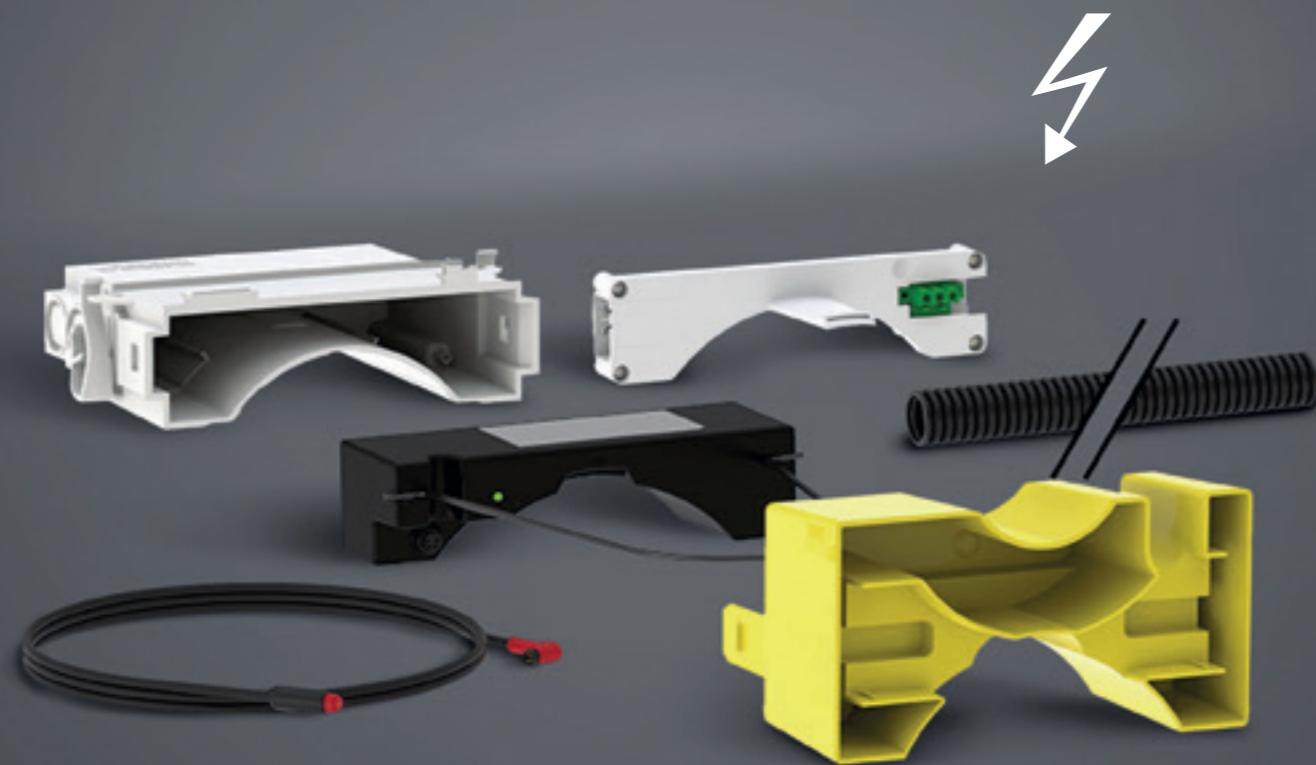
The flow rate can be set to any one of five levels. A slower flush can help prevent water from splashing out of the toilet.

*Airborne sound reduction in bathrooms of 13.5 dB(A). A 10 dB(A) reduction translates to half the perceived loudness.

GEBERIT POWER & CONNECT BOX

MORE POWER FOR THE WC

An electrical connection to your toilet opens up a whole new world of comfort options for your bathroom. The Geberit Power & Connect box ensures the toilet installation element has everything you need to either install electrical functions immediately or retrofit them at a later date. This makes work easier for plumbers and opens up possibilities for additional sales.



OUTSTANDING COMFORT, WELL PREPARED

An electrical connection to your toilet gives it a wide range of functions that make your toilet more comfortable and versatile. For example, Geberit AquaClean shower toilets boast hygienic cleaning with fresh water, an odour extraction unit behind the flush plate, an orientation light for night-time toilet trips and touchless flush actuation. Future developments could also see the toilet integrated into smart home systems.

THE POWER & CONNECTION BOX IN CONCEALED CISTERNS

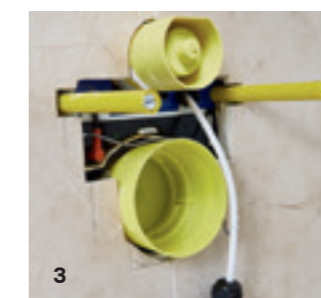
The Power & Connect box is the perfect solution for connecting your toilet to the power supply. It can be integrated into Geberit Duofix and Geberit GIS installation elements for Sigma and Omega concealed cisterns with installation depths of 12 cm. It comes as standard in some designs. The box sits behind the ceramic pan and cannot be seen from the outside. It can also be combined with any toilet.

- Installation set: easy to prepare for retrofitting electrical connections
- Ready-to-fit set: connection plate with power supply unit
- Clear separation of work between plumbers and electricians



↑ Installation sets and ready-to-fit sets sit behind the ceramic pan. A protection cover ensures that the box stays clean during construction work.

1 Insert the connection plate into the installation set. 2 An electrically qualified person connects the connection plate to the mains power supply. 3 Insert the 12V power supply unit into the plug connection. 4 Use a special cable to connect the power supply to the planned components.



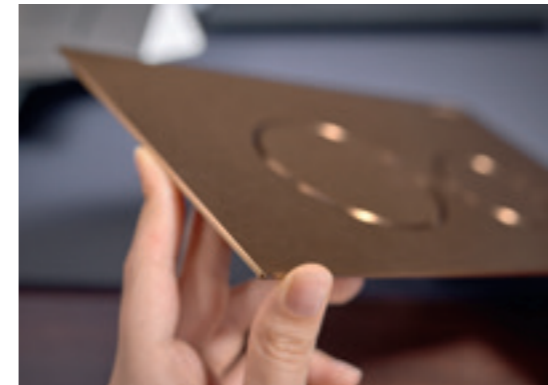
GEBERIT ACTUATOR PLATES

DESIGN MEETS FUNCTION

With a variety of materials, colours and design families with suitable actuations and covers for toilets and urinals, Geberit offers a comprehensive range of actuator plates to meet the needs and preferences of almost every customer.



GEBERIT SIGMA40 WITH SLIM DESIGN
Sleek and elegant designs in metal or glass.
↓



↑
OPTIONAL INTEGRATED ODOUR EXTRACTION UNIT
A high-quality ceramic honeycomb filter removes unpleasant smells.

DESIGNS FOR EVERY BATHROOM STYLE

The actuator plate is a key design feature in any bathroom. Geberit allows customers to choose from a wide variety of surfaces and designs – from plastic and glass to metal and natural stone.

PERFECT FUNCTION

Choose between dual flush, stop-and-go flush and touchless actuation: the Geberit range includes all standard features.

- Wide choice of designs with round and square buttons
- Premium materials in plastic, glass, stainless steel and natural stone
- High-quality mechanism for reliable flush actuation
- Optional additional comfort: odour extraction unit



GEBERIT SIGMA FLUSHING SYSTEM

- Geberit Sigma concealed cistern, minimum construction height 112 cm.
- (Pre)wall thickness at least 12 cm (shell excluding waste water drainage).
- Front actuation.
- Guaranteed availability of functional spare parts for 50 years.



GEBERIT OMEGA FLUSHING SYSTEM

- Geberit Omega concealed cistern, minimum construction height 82 cm.
- (Pre)wall thickness at least 12 cm (shell excluding waste water drainage) with front actuation.
- Front or top actuation.
- Guaranteed availability of functional spare parts for 50 years.

112 cm
98 cm
82 cm

FOR BATHROOM FURNISHINGS THAT GO TOGETHER PERFECTLY

ROUND OR SQUARE DESIGNS

Geberit offers actuator plates in classic round shapes and in square designs with clear edges, making it easier to find the perfect plate for your bathroom project.

TOILET AND URINAL DESIGN FAMILIES

Suitable flush plates and covers for touchless urinal flush actuation round out the range. This allows you to implement consistent design concepts in public and semi-public bathroom and toilet facilities.

**NEW DESIGN FAMILIES,
NEW NAMES**
www.geberit-global.com/showroom



← THE NEW GEBERIT SIGMA40 stands out thanks to its sleek widescreen shape.

ACTUATOR PLATES

SIGMA



SQUARE

01



Sigma01

10



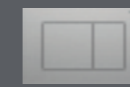
Sigma10

20



Sigma20

40



Sigma40

50



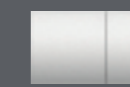
Sigma50

60



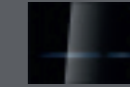
Sigma60

70



Sigma70

80



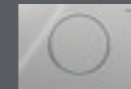
Sigma80



ROUND



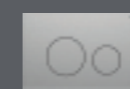
Sigma01



Sigma10



Sigma20



Sigma40



Sigma50



Sigma10 infrared

OMEGA



SQUARE



Omega10

NEW



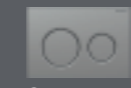
Omega20



Omega60



ROUND



Omega01

NEW



Omega20

URINAL FLUSH ACTUATION

TYPE



SQUARE

01



Type 01

10



Type 10

40



Type 40

50



Type 50



Type 01 infrared



Type 40 infrared



ROUND



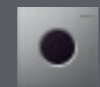
Type 01



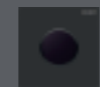
Type 10



Type 40



Type 01 infrared



Type 10 infrared



Type 40 infrared

BARRIER-FREE SOLUTIONS

INSTALLATION ELEMENT DESIGNED FOR **EVERY** **USER**

Geberit installation systems for accessible bathrooms offer flexible solutions that make life easier for users with disabilities. Bathrooms can be easily adapted to meet different user needs thanks to clever fittings and pre-fittings.





↑
Geberit Selnova WC ceramic with extra long projection,
Geberit actuator plate Sigma10, Geberit Option mirror,
Geberit Selnova Comfort washbasin, Geberit trap and shower
drain.





↑
Geberit has the perfect installation elements for all accessible
bathrooms.

- Installation elements for wall-hung toilets capable of bearing high static loads
- Optional extras include pre-fittings for electrical connection, support rails and handles, and remote flush actuation
- Washbasin element for wheelchair-accessible washbasins
- Easy to integrate into all Geberit installation systems

 Pre-fitted mounting plates for
wall-hung support rail

 Comes ready for electrical
connection

 Can bear loads of up to 400 kg

 Extended projection up to 70 cm

FEATURES DESIGNED FOR MORE COMFORT

Geberit offers a range of additional solutions to make day-to-day life easier for people with disabilities and allow them to use bathrooms independently. With Duofix, Geberit AquaClean shower toilets, pneumatic remote flush actuation and electronic flush control can be integrated into Geberit GIS WC elements. Installation elements for washbasins can be fitted with touchless washbasin taps as well as concealed and space-saving traps.



GEBERIT PRODUCT SYSTEMS

PERFECT HARMONY

Geberit products and solutions – both behind and in front of the wall – are designed to work together perfectly. This gives you complete systems that not only provide clear benefits in terms of installation but also work reliably and are easy to service.

GEBERIT WC SYSTEM

OPTIMAL WC PERFORMANCE FROM A SINGLE SOURCE



REFRESHING HYGIENE
Gentle cleaning with water thanks to spray functionality with WhirlSpray shower technology.

Thanks to the optimal coordination of all system components – from the concealed cistern technology behind the wall to the ceramic appliance in front of the wall – the Geberit WC System offers five clear advantages. Both plumbers and end users benefit from the outstanding performance.

*For more information, visit: www.geberit-global.com/wc-system



40 PER CENT FASTER TO INSTALL
Many detailed solutions that have been seen in practice and incorporated in development make the new Duofix and WC ceramic appliance even more versatile and easier to install.



UP TO 10 TIMES BETTER FLUSH PERFORMANCE
Thanks to the hydraulically optimised combination of flush valve and TurboFlush WC ceramic appliance, the Geberit WC System achieves a precise and powerful flushing-out performance that is up to ten times higher than the requirements of international standards.



MORE THAN 30 PER CENT QUIETER
The optimised hydraulics on the flush and fill valve together with the special inner geometry of the TurboFlush WC ceramic appliance ensure ultra-quiet flushing out of the toilet.



COMPREHENSIVE DESIGN OPTIONS
Geberit offers an outstanding selection of actuator plates in different designs, colours and materials that are a perfect match for any bathroom style.

PROVEN QUALITY AND LONG-TERM SPARE PARTS AVAILABILITY

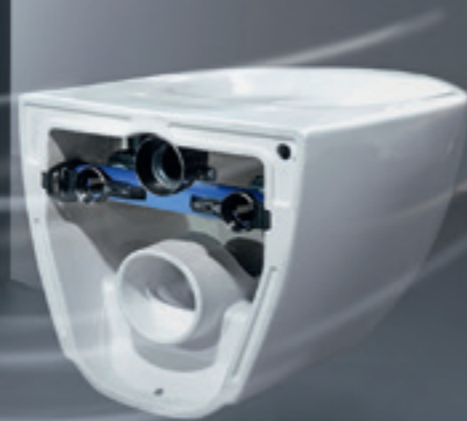


50 YEARS OF SPARE PARTS AVAILABILITY

40 PER CENT QUICKER TO INSTALL THAN CONVENTIONAL WC SYSTEMS*



Geberit's concealed cistern and WC ceramic appliance go together perfectly. The innovative installation techniques mean that the entire installation is 40 per cent faster than with conventional cisterns and WC ceramic appliances.



*Installation time was assessed internally by comparing installation time with competitor products. The reduction in time is mainly due to the Type EFF3 toilet fastening compared to the standard Fischer fastening.



↑
The EFF3 toilet wall fastening can be tightened from above using an Allen wrench through the openings for the toilet seat.



↑
No more readjusting required: a worm gear in the EFF3 fastening pulls the ceramic pan tight against the wall.

TYPE EFF3 FASTENING

The EFF3 fastening technology makes installing laterally shrouded Geberit WC ceramic appliances simple, fast and almost tool-free.

WC SEAT INSTALLED IN NO TIME

The WC seat is conveniently aligned and fixed from above without a template. What's more, the EasyMount hinge for easy WC seat installation has been further developed to make removing it easy, too. It can be taken out completely without parts falling into the ceramic appliance. This makes installation even easier.

- Mostly tool-free installation
- Simple EFF3 fastening
- Clever installation devices



←
Quick-release WC seat hinges: lift up the toilet seat and lid and simply pull upwards to remove.

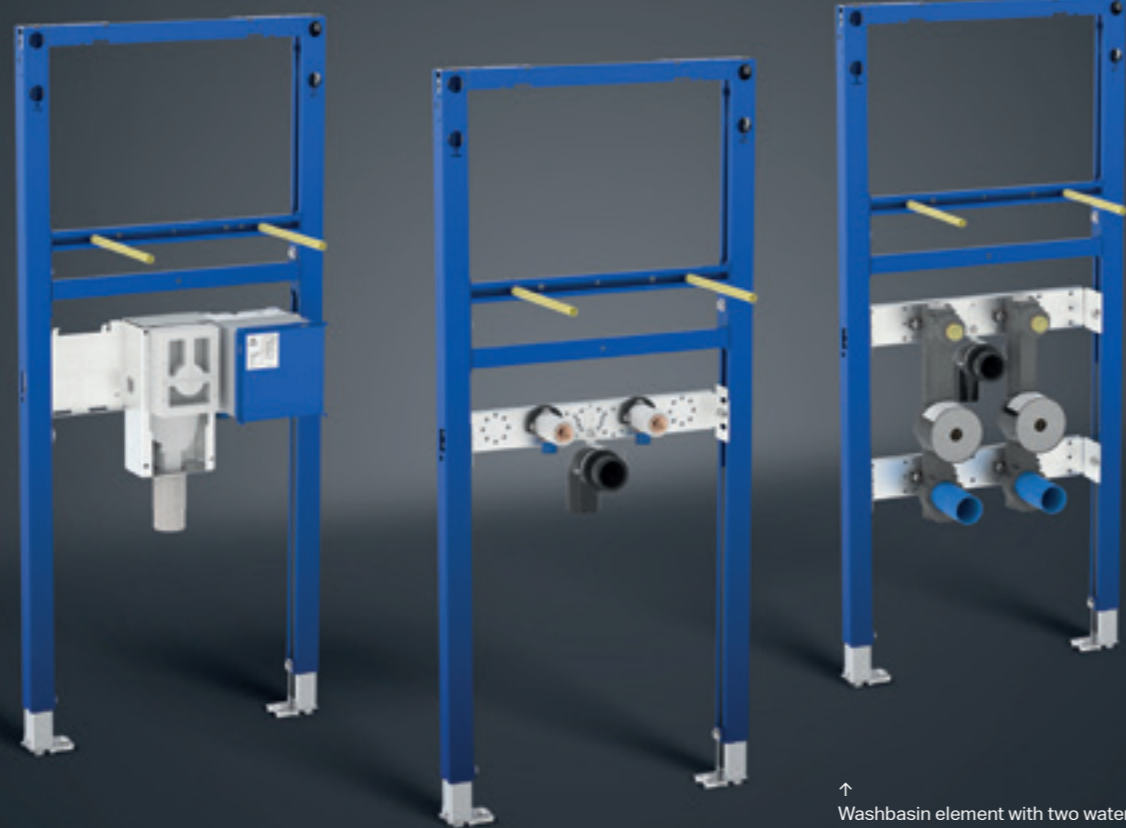


LEARN MORE

You can find more information about all installation benefits here:
www.geberit-global.com/WC-system

THE RIGHT WASHBASIN AREA FOR EVERY BATHROOM

The washbasin area is the focal point of the bathroom. Geberit offers installation elements for all types of washbasins in the Geberit GIS, Duofix and Kombifix systems. Installation elements with additional fittings to suit specific needs are also available.



↑ Washbasin element with concealed function box and trap

↑ Washbasin element with standard tap

↑ Washbasin element with two water meter sections



↑ Integrated mounting plate made of wood for securely fitting to base cabinets.



↑ The threaded rods have deep-drawn threads, so they can be screwed in to the required length without needing to cut them to length. You can also use movable T-slot nuts.

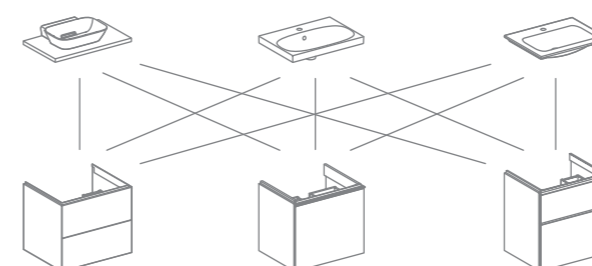
FOR WASHPLACES LITTLE AND LARGE

Our installation elements make it easier to design and install the perfect washbasin area with a range of washbasins, double washbasins and small handrinse basins. The threaded rods are fixed in place with deep-drawn threads at a position that fits around 90 per cent of all washbasins. This allows plumbers to simply screw them to the required length, eliminating the need to cut them to the correct size. Sliding threaded nuts are also available for washbasins of different sizes. The water supply connection units and traps are supplied. Suitable elements are available for all Geberit installation systems.

OPTIONAL FEATURES AND ACCESSORIES

The function elements of our touchless washbasin taps can be housed in a preinstalled function box. This includes a mixer tap, thermostat, electronics, power supply and generators for a self-sustaining power supply.

- Easy to install on washbasins of all sizes
- Wide range of options
- With furniture fittings



← Geberit's Mix & Match concept allows you to combine basins and bathroom furniture from the popular Geberit Acanto, Geberit iCon and Geberit ONE series to suit you. It's the perfect way to create unique and personalised washbasin environments!

GEBERIT WALL-MOUNTED TAPS

FREEDOM TO MOVE AT THE WASHBASIN

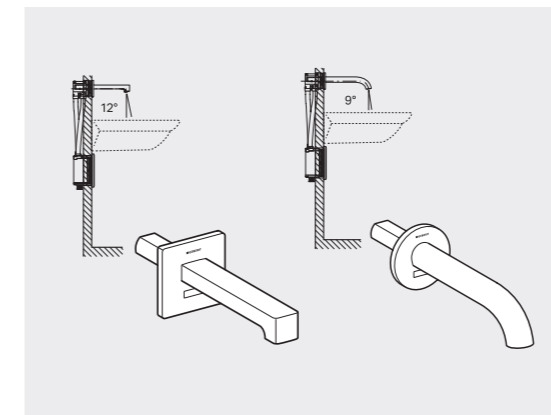
Wall-mounted taps offer clear benefits when it comes to hygiene and ease of cleaning. The washbasin environment looks tidy and is very easy to use. Geberit's special installation elements for washbasins make it incredibly easy to accurately position the wall-mounted taps.



↑ Element ready to be fitted with Geberit wall-mounted taps.

↑ Element ready to be fitted with taps from other manufacturers

The infrared sensor is the only technical element visible



↑ Geberit Brenta and Piave washbasin taps, wall-mounted



↑ Concealed function box in different models, e.g. with thermostat and mixer

- Easy installation of wall-mounted taps
- Electronics for touchless taps stored securely
- Mounting plates for other taps

PRECISE POSITIONING OF GEBERIT TAPS

The element for Geberit wall-mounted taps comes with a crossbar for quick and secure installation. The electronics for touchless taps remain out of sight but are easily accessible in the installation element.

MOUNTING PLATES FOR OTHER TAPS

For taps from other manufacturers, Geberit's installation elements have standardised, robust mounting plates made of wood that you can use to attach fitting bases.

LEADING FLEXIBILITY

The height of all key components, including the mounting plate for other taps, the function box, the washbasin fastening and the drain, is adjustable.

VANDAL-RESISTANT

Wall-mounted taps are fixed securely in place, reducing the risk of deliberate damage. Sensitive electronic components are securely concealed in the function box.

GEBERIT URINAL SYSTEM

EASY TO SERVICE, COST-EFFECTIVE, ATTRACTIVE

Geberit is your go-to supplier for all urinal system components. Our products are designed to work together perfectly, both technically and visually, to create our complete urinal systems. The range offers lots of combination options, providing solutions for all types of bathroom facilities.



↑ Element for urinals with covered and vandal-resistant urinal flush control.

↑ Geberit Duofix element for urinals with visible flush control



GEBERIT CONTROL APP
You can find the Geberit Control app in the App Store for iOS and in the Play Store for Android by following this link: www.geberit-global.com/controlapp

→ Easy installation with proven fastening technology

Removable flush guide for easy maintenance and cleaning of rimless Geberit Selnova urinals
↓



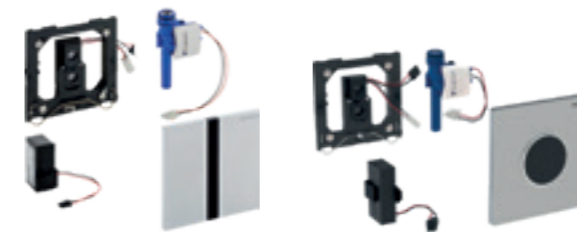
- Unmatched flexibility: concealed urinal flush control, integrated urinal flush control, waterless operation
- Impressive efficiency: optimum flush performance from 0.5 litres
- Uncompromisingly hygienic: rimless ceramic urinals
- Power supply: mains operation, battery, self-sustaining with generator
- Universal design: large selection of ceramic urinals, suitable partition walls, actuation and cover plates to match WC flush plates

MEET EVERY REQUIREMENT IN PUBLIC SANITARY FACILITIES

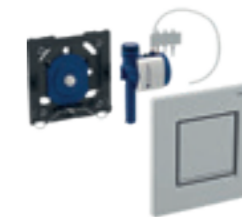
The Geberit Duofix, GIS and Kombifix installation systems provide comprehensive solutions for the complex requirements of public, semipublic and private urinal systems. Our wide range is suitable for lots of different urinals, including ones made by other manufacturers. The elements are sure to impress during both installation and operation thanks to outstanding cost-efficiency and easy maintenance.

UNMATCHED FLEXIBILITY

Concealed urinal flush controls, integrated urinal flush controls and solutions for waterless operation are available to suit the requirements and the building's layout.



↑ Touchless urinal flush control for mains and battery operation

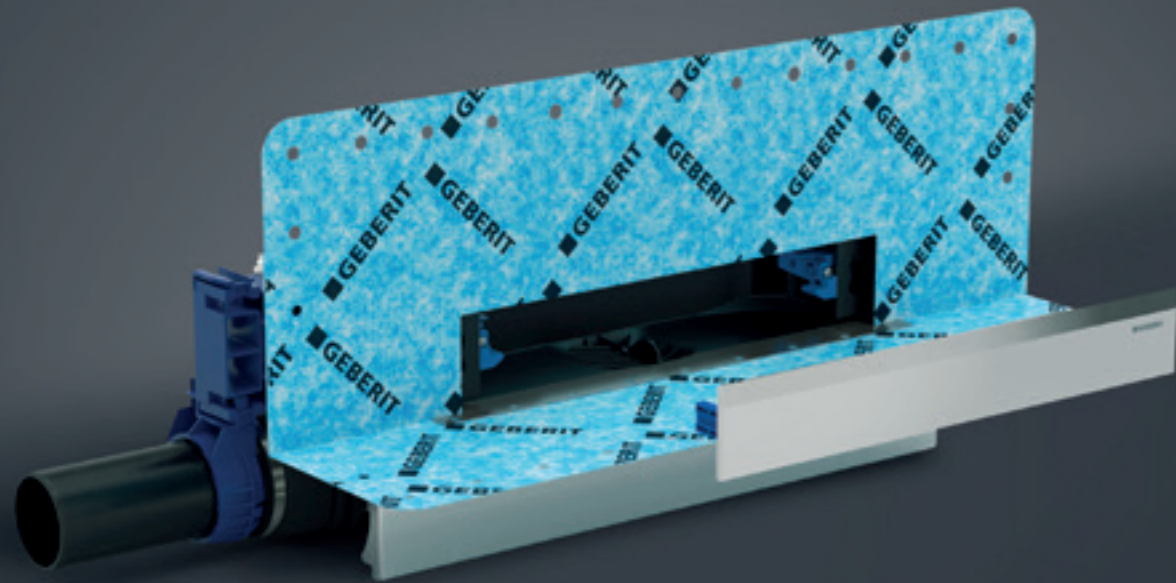


↑ Urinal flush control with pneumatic actuation

GEBERIT SHOWER AREA

EASY INSTALLATION, SECURE CONNECTION

Floor-even showers give you more freedom of movement and step-free access to the shower area. All our showers boast attractive, easy-to-clean designs and innovative drainage technology – whether it's a shower surface made of antislip materials, shower channels that can be installed where you need them, or wall drains and classic floor drains for a consistent bathroom design.



↑ The Geberit CleanWall for floor-even showers integrates perfectly into Geberit installation systems and moves all drainage into the prewall



Discover the whole range of Geberit shower solutions with shower channels, floor drains and shower surfaces:

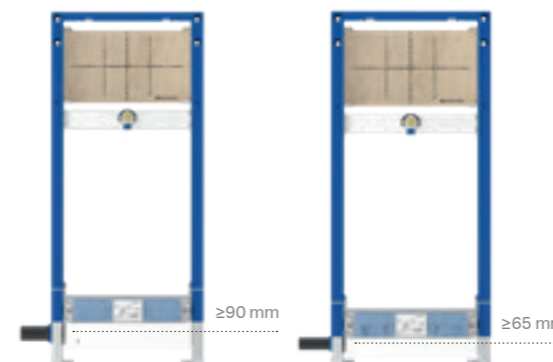
www.geberit-global.com/shower

Elements for wall drains with premounted sealing fleeces make it easier to get a reliable seal
↓



↑ Clever detail: an easy-to-remove comb prevents clogging

- Closed, visually attractive floor surface
- Easy connection to existing discharge pipes
- Sealing fleece premounted at the factory
- Practical cleaning
- Integrates perfectly into Geberit installation systems



↑ Geberit elements for showers with wall drains offer flexible solutions for new buildings and renovations

An optional collector profile as wall termination directs water to the wall drain and can be cleaned with a cloth
↓



PREWALL DRAINAGE

The Geberit CleanWall is almost invisible as it directs water away from the shower. Shower surfaces and drains blend together seamlessly, creating a continuous floor surface. The shower is fully accessible. Underfloor heating can be installed under the entire surface. Installation and sealing are incredibly simple thanks to easy integration into the Geberit installation system, flat trap and premounted sealing fleece.

The integrated, easy-to-remove and easy-to-clean comb insert helps prevent clogging. The visible cover is available in different surfaces made of stainless steel and plastic or tile-bearing.



↑ The hydraulically optimised trap ensures a high discharge rate and tension-free connection with low construction heights

NEW

GEBERIT CLEANFLOOR SHOWER SURFACE

STYLISH AND FUNCTIONAL

With the complete system of Duofix installation frame and CleanFloor shower surface, Geberit sets new standards for floor-even shower solutions. The stylish shower surface is durable, easy to maintain and feels pleasant underfoot.

→ Shower surface in pleasantly warm mineral material with pre-applied sealing fleece.



↑ Smart, easy installation – up to three times faster with the Duofix installation frame than with conventional systems.



Discover the whole range of Geberit shower solutions with shower channels, floor drains and shower surfaces: www.geberit-global.com/shower

- Reliable sealing thanks to pre-applied sealing fleece
- Durable, high-quality shower surface made of mineral composite
- Low water impact noise while showering
- Can be installed either floor-even or raised
- Available in various sizes with three colour options
- Matching drain cover made of mineral composite



↑ The slip-resistant, pleasantly warm surface impresses bathroom users.



↑ The shower surface and installation frame work seamlessly together. Fast, secure installation convinces both installers and end users.



↑ Easy-to-remove comb insert keeps drains clog-free.

QUALITY THAT CONVICES BATHROOM USERS

The smooth, seamless surface made of high-quality mineral composite is warm underfoot, slip-resistant and easy to clean. The integrated comb insert makes maintenance effortless, ensuring lasting hygiene in the shower. The material lets water flow off gently and creates a relaxing atmosphere in the bathroom. Whether installed floor-even or raised, available in various sizes and colours – the Geberit CleanFloor shower surface combines elegance with functionality, giving any bathroom a modern, refined look.

INSTALLATION ADVANTAGES THAT IMPRESS INSTALLERS

Together with the Duofix installation frame for shower surfaces, Geberit CleanFloor provides a complete solution for high-quality showering areas. Smart installation routines speed up construction and ensure customer satisfaction.



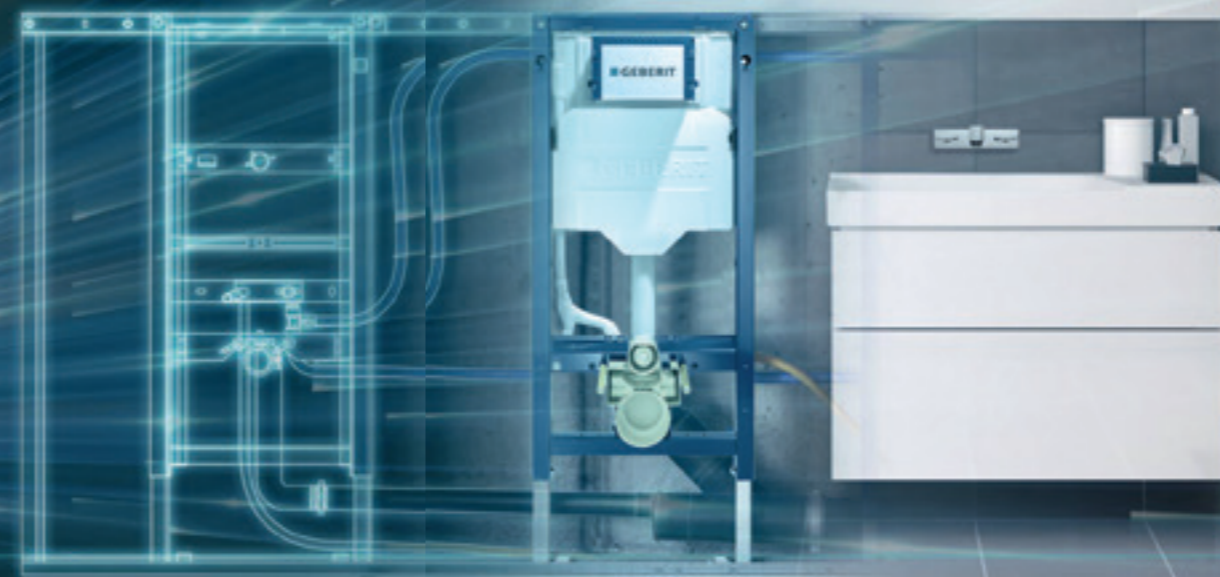
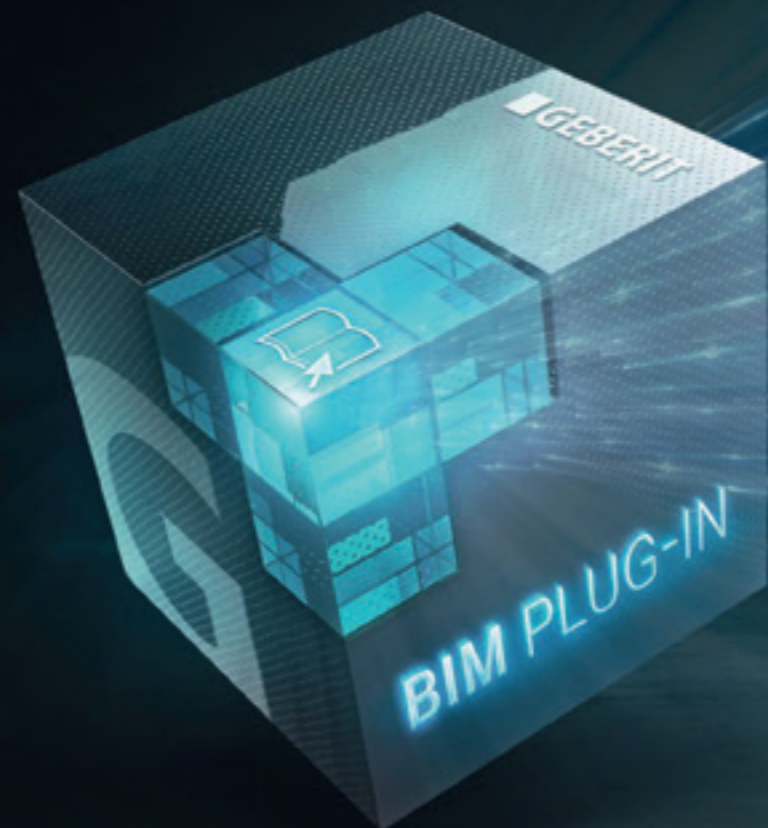
↑ More design choices: three colour to match any bathroom style.

PLAN WITH GEBERIT

DATA CREATE SPACES

Digital technology is transforming construction. At Geberit, we are continuously investing in improving our data and digital tools. We provide customers with our data and software solutions to help them meet the challenges of their projects – both now and in the future.

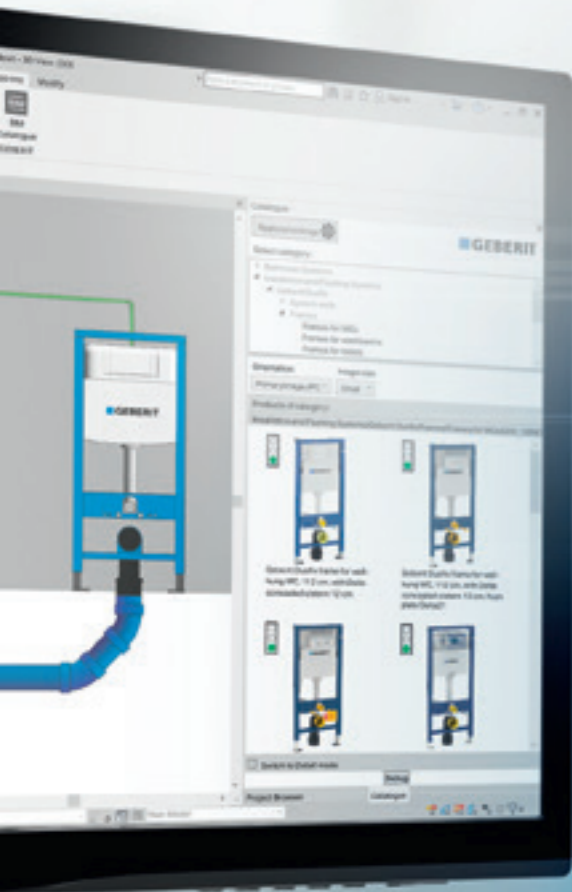
www.geberit-global.com/tools-apps



PLANNING SOFTWARE AND DATA SOLUTIONS

YOUR WORK, OUR TOOLS

Geberit delivers on its “Know-How Installed” promise with its planning support tools too. Get to know the tools that can help you plan your projects quickly, efficiently and with the future in mind.



Family:	Geberit Duofix	Load
Type:	458.132.00.1	Dupli
Type Parameters		
Parameter	Value	
IFC Parameters		
ifcDescription	Geberit Duofix element wall-hung WC, 112 cm, fa concealed cistern 12	
ifcExportAs	ifcSanitaryTerminalTyp	
ifcExportType	CISTERN	
General		
brandName	Geberit	
Product brand	Duofix	
type	Delta 12 cm	
Article number	458.132.00.1	
Product name	Geberit Duofix element wall-hung WC, 112 cm, fa concealed cistern 12	
EAN	4025416451211	
Characteristics	*Self-supporting frame powder-coated / Frame top open	
Application purposes	*For drywall constructi installation in part- or n height prowall installati	
Scope of delivery	*Angle stop valve R 1/2 adapter ring/Protection service opening, made polystyrene foam	
Maximum operating temperatur	25 °C	
Flush volume, factory setting	5.8 and 3 l	
Flush volume large, adjustment	4.5 / 6 / 7.5 l	
OK Cancel Ap		

↑ With the Geberit BIM Plug-in, Geberit is offering an innovative solution for the digital planning of technical building systems.



GEBERIT BIM PLUG-IN

The Geberit BIM plug-in for Autodesk® Revit® is an integrated tool that combines all Geberit planning and calculation tools and provides access to BIM content for Geberit products in an integrated application. You can use the installation module to create installation system walls almost automatically.

www.geberit-global.com/bim



GEBERIT SPECIFIER

The Geberit Specifier can guide you choosing the right products for your projects: not only you will see all the elements needed for an assembly, an advanced filtering system will show you only the products compatible to your specifications.

spec.geberit.com



GEBERIT PRO





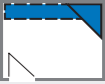
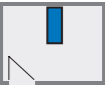


Our comprehensive app neatly displays all Geberit services on your smartphone. It has a range of useful information and practical resources to support plumbers and provides various ways to get in touch with Geberit directly.

www.geberit-global.com/pro



↑ The Geberit Pro app works with a scanning function or image recognition to help you identify Geberit products and models using just your phone. You can also benefit from access to the digital product catalogue complete with further product information, installation manuals and spare parts.

GEBERIT SYSTEM TECHNOLOGY GIVES YOU MORE ADDED VALUE AND PRODUCTIVITY

FLOOR PLAN	Installation prewall			Installation partition wall	Installation room divider	
	Part-height	Room height (duct)	Combinations (part-height with duct)		Part-height	Room height (duct)
 Prewall with wall on both sides	GIS Duofix	GIS Duofix	GIS Duofix			
 Partition wall				GIS Duofix		
 Prewall	GIS Duofix	GIS Duofix	GIS Duofix			
 Prewall open on both sides	GIS	GIS	GIS Duofix			
 Prewall with corner element	GIS Duofix	GIS Duofix	GIS			
 Room divider					GIS	Duofix GIS
 Stand-alone solution						
 Corner element						

¹⁾ With additional trades (bricklayers, drywall installers).

RELIABLY AND SAFELY MEET FIRE PROTECTION AND SOUND INSULATION REQUIREMENTS

SOUND INSULATION	Protection principles		GIS	Duofix	Kombifix	
	Sound insulation Standard	Standard according to DIN 4109				
	Sound insulation Standard	Standard according to DIN 4109	●	●	●	As prewall installation in front of a solid partition wall
	Increased sound insulation	Stricter requirements in accordance with DIN 4109, addendum 2 and/or Association of German Engineers (VDI) 4100: 2012-10	●	●	●	As prewall in front of a solid partition wall to SSt II
	Partially increased sound insulation	Partially stricter requirements in accordance with VDI 4100: 2012-10 in the area that requires protection	●			
AREA REQUIREMENTS	Statics	Wall-hung WC/bidet: up to 400 kg Washbasin: up to 150 kg Urinal and mounting plate: up to 100 kg	●	●	●	Wall-hung WC/bidet: up to 400 kg Washbasin and urinals: up to 150 kg
	Moisture protection	Geberit plasterboard panel and Geberit aqua panel Pro	●	●		
	Accessibility	Installation element for • Wall-hung WC and washbasin area • Support and handle systems • Shower element for floor-even showers	●	●		Installation element for the WC
	Industrial prefabrication		●			

You can find more details in Geberit's brochures.

www.geberit-global.com/download-center

- Higher than average innovative capacity thanks to ongoing investment in our own development and research projects
- Reputation for outstanding expertise in numerous fields
- Uncompromisingly high quality and production standards

AN ORIGIN STORY FOR THE FUTURE

FOR TOMORROW'S SANITARY TECHNOLOGY

Geberit aims to improve people's quality of life over the long term with innovative solutions in the area of sanitary technology. To do this, the company is constantly developing its products, systems and solutions and, as the market leader in sanitary technology, keeps setting new standards.

On average, Geberit invests two percent of its sales into its own research and development and applies for around 20 new patents every year. Geberit's innovative capacity is based on existing know-how and the ongoing research activities in fields such as hydraulics, statics, hygiene, acoustics, materials and fire protection.

SYSTEMATIC APPROACH

A customer requirement or brilliant idea is often the starting point for developing a new product. Meticulous, systematic work then follows, because the innovation process at Geberit does not leave anything to chance. This is why, for example, the required characteristics of the product material that will later go into series production are defined at a very early stage. If such a product material does not yet exist, the product material engineers get to work and develop – in close cooperation with plastic producers, universities and test institutes, of course – a new product material themselves. Although this involves a great deal of time and effort, this procedure has proven worthwhile in, for example, the development of the Geberit Silent-Pro highly sound-insulated drainage system or the Geberit PushFit piping system.

50 YEARS IN THREE MONTHS

As soon as the first prototypes for a new product are available, they are put through their paces. To do this, tough tests are carried out in the sanitation laboratory to simulate a product life of 50 years within three months. Only the best product solutions survive this hardness test. At the Building Technology and Acoustics Laboratory, the static and acoustic characteristics of individual products as well as whole systems are tested. Here, experts investigate how a particular innovation or improvement behaves in conjunction with other sanitary technology components.

Testing is carried out by the application engineers once the scientists and engineers have given a new innovation the green light. Series production is not contemplated until the product has proved successful in the market within the scope of numerous test installations.

Geberit International Sales AG
CH-8640 Rapperswil
Switzerland

sales@geberit.com

www.geberit-global.com